



## St Peter's Traffic Management Plan

School:	St Peter's Primary School, EPPING
Principal	Angela Tonkin
Health & Safety Representatives	Daniela Torcaso, Claire Toner
Person Completing TMP	Angela Tonkin, Daniela Torcaso, Claire Toner
Date of Plan	17/01/2023
Date of Plan Review	17/01/2025

St Peter's Primary School takes the safety of students, staff, parents, carers and the wider community seriously, understanding that all of the above have a combined accountability to ensure that the safety measures in place are followed each day.

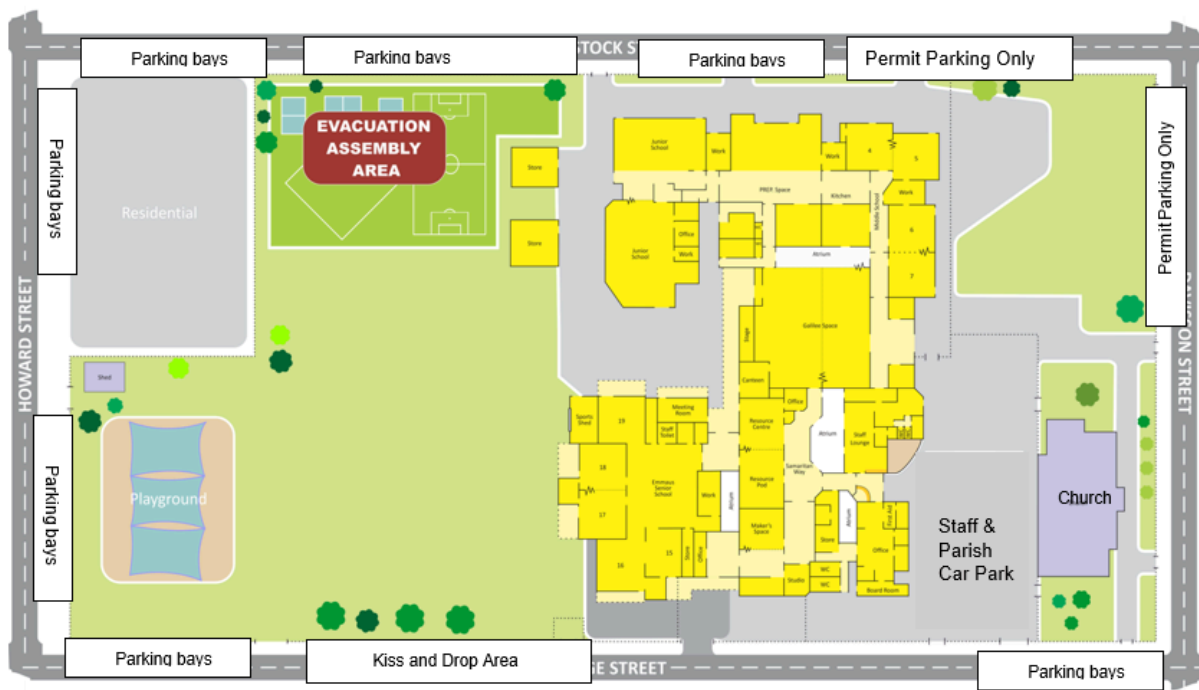
St Peter's Primary School is in a residential setting, in the suburb of Epping. St Peter's is located opposite St Monica's College on Davison Street and is within close proximity of Epping Train Station, this promotes high traffic movement around the school across morning and afternoon peak periods.

To ensure the safety of our students, St Peter's Primary School has, where possible, tried to eliminate or control vehicle / pedestrian interactions.

St Peter's Primary School has developed a Traffic Management Plan for the school that encompasses the following items:

### Description of Workplace:

Site:	St Peter's Primary School, 32 Wedge Street, EPPING VIC 3076		
No. Students:	360	No Staff	43
Year levels	Prep - 6	Hours of Operation	8am - 4pm weekdays
Office phone:	9401 1157	Office email:	office@stprepp.catholic.edu.au
Website	www.stprepp.catholic.edu.au		
Before/After School Care	Their Care 06:30 - 08:50 am / 3:30 - 6:00 pm Mon - Friday 1300 072 410		



## Site Plan

All drivers around the school share responsibility for children's safety and are asked to show care, consideration and courtesy at all times. There are parking restrictions in place around the school. All street parking around the school comes under the jurisdiction of Whittlesea Council and as such are subject to their bylaws. It is important you familiarise yourself with them as the area is monitored by parking inspectors.

## Wedge Street Kiss and Drop

Parents may use the kiss and drop in Wedge Street to drop off their children before school and pick them up in the afternoon.

The following rules apply:

- Cars are to drive through the area at a reduced speed - 5km per hour (walking pace only) Please advise your children if you are picking them up from this area so they come immediately.
- Do not make a right turn from Wedge Street into the kiss and drop area as per the signage installed. Traffic only permitted to enter from the left lane.



### **No right turn into kiss and drop**

- Drive to the end of the kiss and drop lane way. This allows a maximum amount of cars to be off Wedge Street to avoid traffic and council fines parking on the road.



### **Drive to the end bay**

### **No parking in kiss and drop, 3 minute max restriction in place**

- Parents are to keep to the left and are not to leave their vehicle unattended.
- Teachers on duty will assist the students. Adults getting out of the car holds up the traffic flow. If you want to get out of the car; park the car in a designated parking bay or side street and walk. Staff will ask cars to move on if they have exceeded the 3 minute restriction to allow students waiting to be collected promptly.



#### **Designated car parking bays in Wedge Street.**

- School bags in the cabin of the car, not in the boot. For safety the children never stand or walk between cars, in case a car accidentally accelerates forward and a child is jammed between cars.
- No adults to get out of the car. Students only to enter and exit cars from the left side (Passenger/footpath side) If this is not possible, do not use kiss and drop
- Students are not permitted to get into a vehicle on the side of the road outside of the designated kiss and drop area. This is a hazard for the student and holds up the kiss and drop line. If this is not an option given your car seating arrangements please do not use the kiss and drop process.
- Be patient and do not overtake cars. Some children need extra assistance with entering and exiting the car.
- Do not turn right when exiting kiss and drop to ensure the flow of traffic.

There are several school crossings erected for the use of the children of St Peter's.

- Davison Street outside the Church/St. Monica's College administration
- Cooper Street, near the entrance to Epping station
- Greenbrook Drive, between Keith Avenue and Peppercorn Parade
- Dalton Road, near the entrance to St. Monica's Junior School
- Coulstock Street

We ask your assistance in educating your children to use these facilities properly. Parents are reminded to observe the traffic signs around the school when visiting the school or Church on school days.

Children should not be allowed to cross to parked cars where traffic is congested. Parking Officers and Police are often in attendance and offenders will be prosecuted. The 40km speed limit applies in all surrounding streets of St Peter's School.



## Coulstock Street Drop off

Seventeen 3 minute drop off bays have been created in Coulstock Street. These bays are designated for parents dropping off their children only. Please do not leave your vehicle and walk your child into school if using these bays.

**PLEASE NOTE NO PARKING IS PERMITTED IN THE NO STANDING SECTION ON THE OPPOSITE SIDE TO THE SCHOOL ON COULSTOCK STREET.**

Drivers who do not adhere to the instructional signage in place may be subject to a fine from Whittlesea Council. The school is unable to intervene with any fines received by parents.

Students are to exit the vehicle and walk straight onto the footpath. Students should not walk behind their own or other vehicles. For a swift departure, please keep school bags with the child in the cabin of the car.

If you intend to walk your child into school we encourage you to park in one of the surrounding streets. There are limited 4P spots at the end of Coulstock St (cnr Howard St) and also in Howard St.



**3 minute parking for drop off in Coulstock Street**

To the right of the main entrance gate on Coulstock Street the bays are marked as 'Permit Parking Only'. Please do not park in these bays.



**Staff Permit Parking Only**



City of Whittlesea

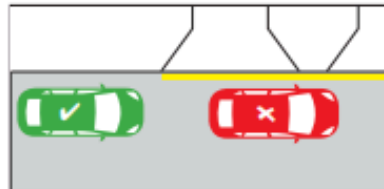
## PARKING AND SAFETY AROUND SCHOOLS

### Speed



Look out for the reduced speed limit around schools and slow down to improve safety.

### Yellow edge line



A driver must not stop on the side of a road marked with a yellow edge line.

### Parking/Stopping signage



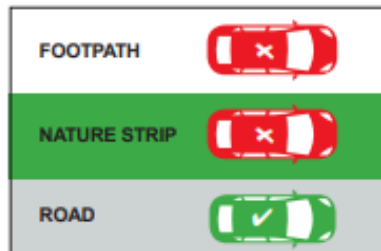
No stopping areas must be kept clear. If times/days are specified, restrictions are only applicable to the specified times/days. You cannot park in a P3 minute area for longer than three minutes.

### School crossings



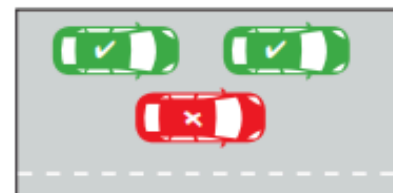
- Look out for flags and Crossing Supervisors
- You must stop for anyone waiting to cross, or who has started crossing
- Please remain stopped until the crossing is clear.

### No parking on nature strips/footpaths



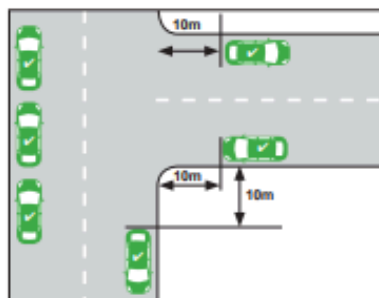
Parking is illegal on nature strips and footpaths.

### Double parking



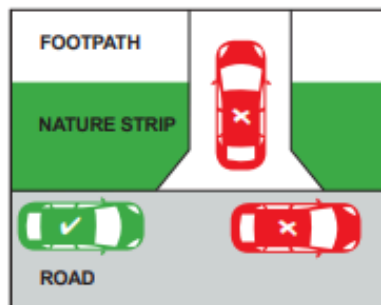
It is illegal to double park at any time. This affects the flow of traffic.

### Within 10 metres of an intersection



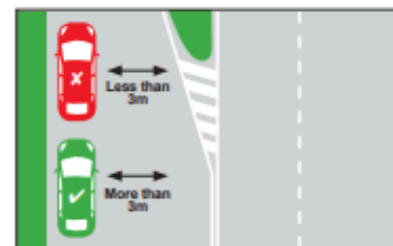
A driver must not stop with any part of their vehicle within 10 metres of an intersection unless signed otherwise.

### Stopping across driveways



It is illegal to stop/park across a driveway unless you stay in the car are there for no more than two minutes and move immediately if required to do so to allow entry or exit by the owner/occupier.

### 3 metre gap for signage



At least 3 metres must be left between your vehicle and the centre dividing line to allow other vehicles to pass safely and not obstruct traffic.

### What can you do to stay safe

- Supervise your children in or near traffic
- Walk or cycle to school with your child
- Respect all road rules, parking signs and instructions from authorities
- Wait on the same side of the street as your child
- Always let your child out of the kerb side of the car.

### Free Telephone Interpreter Service

العربية	9679 9871	Italiano	9679 9874	ਪੰਜਾਬੀ	9679 9879	Tiếng Việt	9679 9878
Ελληνικά	9679 9873	Македонски	9679 9875	தமிழ்	9679 9879	Other	9679 9879
हिंदी	9679 9879	简体中文	9679 9857	Türkçe	9679 9877		